



PRICING & INFORMATION GUIDE

2026 Season



3834 County Road A
Rosholt, WI 54473
(715) 677 - 4969

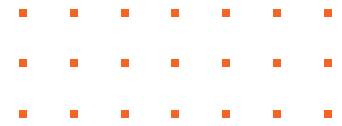
wisconsinlionscamp.com/rentals

Table of contents

Introduction	01
Frequently Asked Questions	02
Lodging Options	04
Meeting Spaces	07
Lodging & Meeting Amenities	11
Food Service	12
Activities & Programming	15
School Group Pricing	17



Introduction



Wisconsin Lions Camp Rentals

Thank you for your interest in Wisconsin Lions Camp Rentals. We are owned and operated by the Wisconsin Lions Foundation, Inc. (WLF), a non-profit organization that administers five statewide projects primarily supported by the Lions Clubs of Wisconsin, as well as other donors. These projects include Eyeglass Recycling, Vision Screening, Diabetes Awareness, Hearing and Wisconsin Lions Camp.

Wisconsin Lions Camp is a very special place. In the summer, we host 10 memorable weeks of summer camp for individuals with disabilities from across Wisconsin. The rest of the year, our facility is available for rental guests to enjoy and experience the magic of Wisconsin Lions Camp for themselves.

We have worked hard to improve our guest experience. In an effort to anticipate our guests' needs, we have expanded our amenities and completed extensive facility improvements.

We feel it is important that you know our mission. Wisconsin Lions Camp Rentals exists to support the projects of WLF. We aim to provide a welcoming environment for a diverse array of guests, while providing an authentic rural camp experience. All employees are valued members of the team that contribute to a collaborative, inclusive and innovative atmosphere. Guest experience will be prioritized to meet rental group goals and objectives. Although we are serious about the work that we do, we will not forget the most important rule of Camp: Have Fun!

Please reach out to us with any questions or to book your event after you have had a chance to review this pricing and information guide for the 2026 season.

Phillip Potter
Hospitality Director



**Wisconsin Lions
Camp Rentals**

Frequently Asked Questions



When is your rentals season?

Our main season runs from January - May and then mid-August - December. We are unable to provide overnight rentals in June, July and early August due to our Summer Camp.

How far in advance can we book?

We accept rental reservations up to one year in advance. Current groups are given the first right of refusal for their date for the next year.



What happens if our group size is different than when we booked?

Two weeks in advance of your rental we will ask to confirm your numbers for the event. Rental groups are given a 10% cushion regarding numbers for their final invoice. This means that a group is invoiced for their actual numbers, as long as they are within 90% of the numbers provided to us two weeks prior to the event. If you have less than 90% of the number provided, we will invoice you as if 90% of your guests attended.

How does the invoice and payment process work?

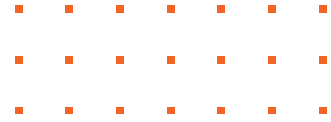
Invoices will be given to the group either at departure or emailed as close to the conclusion of your event as possible. Invoices are due within 30 days of being issued and can be paid via cash, check, money order, credit card or PayPal.

What is your cancellation policy?

If a rental group wishes to cancel their reservation and notifies us in writing at least 30 days prior to the reservation start date, the deposit may be transferred to another date within the next year or refunded. Between 14 days and 30 days prior to the event, the deposit will be forfeited. If the reservation is cancelled 14 days or less prior to the event, rental groups will be billed for 50% of the fees based on the reserved number.



FAQ (cont.)



What if our event relies on the weather?

Groups requiring snow or other special considerations to run their programs may be rescheduled up to the actual event date without penalty. These groups will have tentative make up dates provided to them at the discretion of the Hospitality Director. The deposits will be carried over to the next reservation or refunded.

What are the insurance and hold harmless requirements?

Groups are required to complete hold harmless paperwork prior to their event. WLF does not provide any insurance coverage for rental groups. Groups must choose the insurance and hold harmless option(s) that work for them:

- *Organizational - Requires a copy of the organization's insurance policy with WLF named as additionally insured. If selecting this option, no individuals will need to complete their own form.*
- *Family - Allows for one adult from each family to sign a waiver for all household members of the family.*
- *Individual - Available for individual adults to complete for themselves.*
- *Youth - Allows parents/guardians to complete for their child under 18.*
- *Day Use Meeting - Available for meeting leaders to sign on behalf of their meeting attendees.*

Do you require a deposit?

Deposits are required, along with a signed rental agreement to complete your booking process. The deposit will be deducted from the final invoice unless damages to the facility are incurred or the rental group chooses to hold the deposit for their next event. If you are unable to provide a deposit, please contact us to discuss.

Will there be other groups at Camp during our event?

Yes, our facility is 440 acres and has plenty of room to spread out. It is common for multiple groups to rent space at Camp at the same time. However, if you would prefer additional privacy, we offer the option to book as an Exclusive Use Group (see page 11 for pricing). For an additional fee, this allows you to book the full facility to ensure you are the only rental group on site throughout your stay.



Lodging Options

Pinewood Lodge

\$945 per night
Overnight Capacity 48

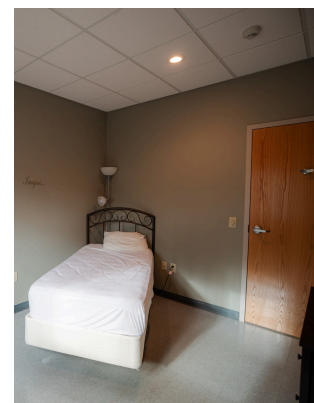
Our largest lodge, Pinewood, offers overnight lodging for up to 48 people. The lodge consists of 6 cabins (4 upstairs and 2 downstairs), each with 8 beds. There are a total of 4 bathroom facilities throughout the building with showers in each bathroom. With multiple lounges, internet access and a beautiful fireplace, Pinewood is a great option for mid-size groups to hold their event in one space. For groups interested in doing their own cooking, a full kitchen is available for an additional fee.



Health Lodge

\$237 per night
Overnight Capacity 10

For groups interested in having individual lodging options, the Health Lodge offers 10 private rooms and a total of 3 bathrooms. There are 8 rooms upstairs and 2 rooms downstairs with lounges on both floors for small group meetings.



**Wisconsin Lions
Camp Rentals**

Lodging (cont.)



Crafts Building

\$79 per night
Overnight Capacity 5

For smaller groups or groups that need limited private lodging, Crafts may be the right space for you. The building contains 2 private rooms and 3 semi-private rooms. Our semi-private rooms are separated by curtains as opposed to full doors. Crafts features a full bathroom with shower and a meeting space.



Duplex Lodging

\$368 per duplex per night
Overnight Capacity 20

Our facility features 9 different duplexes, all with 20 beds per duplex. There are two main designs of our duplexes. Seven duplexes have 2 rooms with 10 beds, separated by a lounge and two bathrooms. The other 2 duplexes have 4 rooms with 5 beds each and a bathroom in each room. Duplex 9 has a large rec room basement available for an additional \$50 per night rental fee.



**Wisconsin Lions
Camp Rentals**

Lodging (cont.)



Tent Camping

**\$6 per person per night or
\$16 per family per night**

If you are feeling adventurous or just want to spend more time in nature, consider our tent camping options. We currently only offer tent camping as part of a larger group who is holding an event at Camp. We have multiple campsites throughout our facility for you to choose from.



RV Sites

\$27 per RV with electricity (first night) or \$16 per RV without electricity (first night) and \$11 per RV each subsequent night

We have a total of 5 RV sites with electricity. The electrical hookup is 30 amp. For those who wish to bring their own generator or stay without electricity, we have options throughout Camp for you to park your RV. As with tent camping, we currently only offer RV sites as part of a larger group who is holding an event at Camp. We do not have water or septic hookups available.



**Wisconsin Lions
Camp Rentals**

Meeting Spaces



For meeting space rentals up to 6 hours (including setup and tear down) is a 1/2 day and rentals over 6 hours are a full day.



Dining Hall

1/2 Day - \$270

Full Day - \$490

Table & Chair Recommended Capacity - 180 Guests
Chair Only Recommended Capacity - 300 Guests



Dining Hall Meeting Room

1/2 Day - \$89

Full Day - \$163

Table & Chair Recommended Capacity - 40 Guests
Chair Only Recommended Capacity - 60 Guests



Memorial Building

1/2 Day - \$147

Full Day - \$263

Table & Chair Recommended Capacity - 70 Guests
Chair Only Recommended Capacity - 150 Guests



**Wisconsin Lions
Camp Rentals**

Meeting Spaces (cont.)

For meeting space rentals up to 6 hours (including setup and tear down) is a 1/2 day and rentals over 6 hours are a full day.

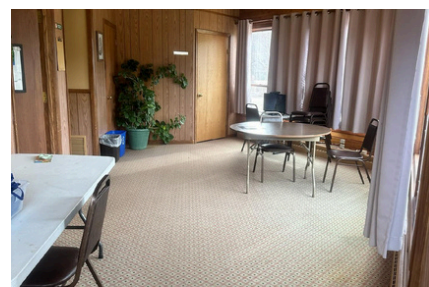


Sun Room

1/2 Day - \$53

Full Day - \$95

Table & Chair Recommended Capacity - 8 Guests
Chair Only Recommended Capacity - 15 Guests



WLF Boardroom

1/2 Day - \$89

Full Day - \$163

Table & Chair Recommended Capacity - 55 Guests
Chair Only Recommended Capacity - 90 Guests

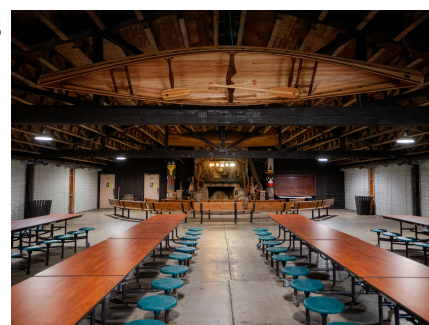


Rec Shelter **No Heat/Air*

1/2 Day - \$147

Full Day - \$263

Table & Chair Recommended Capacity - 150 Guests
Chair Only Recommended Capacity - 250 Guests



Wisconsin Lions
Camp Rentals

Meeting Spaces (cont.)

For meeting space rentals up to 6 hours (including setup and tear down) is a 1/2 day and rentals over 6 hours are a full day.



Crafts Building

1/2 Day - \$53

Full Day - \$95

Table & Chair Recommended Capacity - 22 Guests
Chair Only Recommended Capacity - 30 Guests



Duplex Lounge

1/2 Day - \$53

Full Day - \$95

Table & Chair Recommended Capacity - 15 Guests
Chair Only Recommended Capacity - 25 Guests



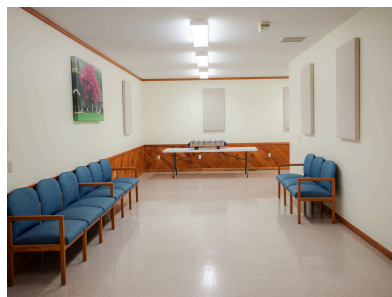
Duplex 9 Basement

1/2 Day - \$89

Full Day - \$163

Table & Chair Recommended Capacity - 50 Guests

Chair Only Recommended Capacity - 75 Guests



Wisconsin Lions
Camp Rentals

Meeting Spaces (cont.)

For meeting space rentals up to 6 hours (including setup and tear down) is a 1/2 day and rentals over 6 hours are a full day.



Upper Health Lodge Lounge

1/2 Day - \$53
Full Day - \$95

Table & Chair Recommended Capacity - 25 Guests
Chair Only Recommended Capacity - 40 Guests



Health Lodge Basement

1/2 Day - \$89
Full Day - \$163

Table & Chair Recommended Capacity - 50 Guests
Chair Only Recommended Capacity - 75 Guests



Pinewood Lodge **Includes 3 Rooms*

1/2 Day - \$173
Full Day - \$315

Table & Chair Recommended Capacity - 15 (breakout), 40 (upper), 50 (lower)
Chair Only Recommended Capacity - 30 (breakout), 65 (upper), 75 (lower)

Breakout Room



Upper Lounge



Lower Lounge



Wisconsin Lions
Camp Rentals

Lodging & Meeting Amenities



Complimentary Upon Request

- Charcoal Grill w/ Charcoal Supplied
- Gas Grill w/ Gas Supplied
- LCD Projector
- Portable Sound System
- 55" TV w/ HDMI Cord on Cart w/ Shelf & Blu-ray Player
- Easel
- Coffee & Water
- Table & Chair Set Up / Take Down

Lodging Specific Amenities

- Bedding Set (1 Pillow, 1 Pillowcase, Sheets & Blanket).....**\$5.50 per set**
- Towel Set (1 towel and 1 washcloth).....**\$2.50 per set**

Additional Amenity Rates

- Boardroom Kitchenette.....**\$80 per day**
- Pinewood Kitchen.....**\$160 per day**
- Flip Chart Paper.....**\$25 per pad**
- Photocopies.....**\$0.12 per one sided copy**

Exclusive Use Rates

- Lodging Capacity Rented less than 50 Guests.....**\$3,000 per day**
- Lodging Capacity Rented 50 - 100 Guests.....**\$2,000 per day**
- Lodging Capacity Rented 101 - 150 Guests**\$1,000 per day**
- Lodging Capacity Rented 151 - 179 Guests.....**\$325 per day**
- Lodging Capacity Rented 180 or more Guests.....**Complimentary**

Lodging capacity refers to the number of beds in a building



Food Service



Our food service team is ready to serve you. We offer standard meal options to suit your needs. The listed rates are per person and include coffee, tea, juice, water and milk for breakfast and milk, coffee, tea and water for lunch and dinner. Guests 3 & under are complimentary with a paying adult. For groups under 15 guests, please contact us for availability and options. Specialty menus can be made for your event for market price.



Continental Breakfast Youth (4 - 12) - \$7.50
Adult (13+) - \$8.50



Breakfast Meal Youth (4 - 12) - \$9
Adult (13+) - \$10



Brunch Meal Youth (4 - 12) - \$12
Adult (13+) - \$14



Bag / Boxed Lunch Youth (4 - 12) - \$9
Adult (13+) - \$10



Lunch Meal Youth (4 - 12) - \$10.50
Adult (13+) - \$11.50



Dinner Meal Youth (4 - 12) - \$11.50
Adult (13+) - \$12.50



**Wisconsin Lions
Camp Rentals**

Food Service (cont.)

In addition to our base meals, we offer the following add-ons. Prices are based on the total number of guests that are part of the meal service, even if they do not choose to eat the add-on.



Salad Bar Add-On

***Must purchase for minimum of 3 meals**

- 25 - 50 Guests.....**\$125 per meal**
- 51 - 75 Guests.....**\$175 per meal**
- 76 - 100 Guests.....**\$225 per meal**
- 101 - 125 Guests.....**\$275 per meal**
- 126 - 150 Guests.....**\$325 per meal**
- 151 - 200 Guests.....**\$375 per meal**
- Over 200 Guests.....**Contact Us for Pricing**



Side Salad Add-On

For groups who are holding shorter events or do not want at least 3 salad bars for their event, we are offering a new side salad option. The side salad offers a lettuce mix, cucumbers, shredded cheese and croutons in addition to ranch, french or balsamic dressings.

- Price per guest.....**\$2 per meal**



Soup or Chili Add-On

- 25 - 50 Guests.....**\$80 per meal**
- 51 - 75 Guests.....**\$118.25 per meal**
- 76 - 100 Guests.....**\$157.50 per meal**
- 101 - 125 Guests.....**\$197 per meal**
- 126 - 150 Guests.....**\$236.25 per meal**
- 151 - 200 Guests.....**\$275 per meal**
- Over 200 Guests.....**Contact Us for Pricing**



Food Service (cont.)

If you aren't interested in a full meal but would still like to have food provided for your event, we offer some additional options.



Camp Treats

- Cookies.....**\$1.25 per person**
- S'mores.....**\$1.75 per person**
- Specialty Dessert Bars.....**\$2.25 per person**
- Custom Desserts & Treats.....**Contact Us for Options & Pricing**



Platters & Snacks

Our team can customize platters or snack tables for your event. Due to the customized nature of this service, pricing will be determined with each group at the time of their request. Examples of platters include Meat & Cheese Platter, Fresh Fruit Platter and a Vegetable & Dip Platter.



Beverage Services

Our team can put together specialty beverages for your event. Due to the custom nature of this service, pricing will be determined with each group at the time of their request. Examples of beverage services include soda, hot chocolate bars with toppings and lemonade service.



Special Diets & Other Information

It is important to us that all of our guests feel welcome while they are here. With that in mind, we do our best to accommodate as many special diets and food allergies as possible. In order to allow us enough time to develop a plan, we require final meal numbers and special diet information at least two weeks prior to your event. In the rare circumstance that we are unable to accommodate a special diet, we will communicate with your group leader so alternate arrangements can be made.



**Wisconsin Lions
Camp Rentals**

Activities & Programming



Complimentary with Lodging or Meeting Rental

- 9 - Square
- Board Games
- Broom Ball
- Cross Country Ski Trail Access
- Field Sports
- Gaga Pit
- Horseshoes
- Pickleball
- Sand Volleyball
- Snowshoe Trail Access
- Basketball
- Boating (Adult Groups)
- Campfire
- Disc Golf
- Fishing (valid license required)
- Hiking Trail Access
- Ice Fishing
- Ping Pong
- Sledding
- Tennis

Outdoor activities are seasonal and availability is subject to weather conditions.



Equipment / Supply Rentals

- Craft Supplies.....**Market Price**
- Cross Country Skis & Poles.....**\$5 per person for length of event**
- Snowshoes & Poles.....**\$5 per person for length of event**
- Hourly Pontoon Boat Rental.....**\$40 per hour**
- Half Day Pontoon Boat Rental.....**\$85 per half day**
- Daily Pontoon Boat Rental.....**\$125 per day**



Staffed Activity Rates for Overnight Guests

\$40 per Facilitator per Hour

- Archery
- Staff Led Complimentary Activities
- Pontoon Boat Driver

\$45 per Facilitator per Hour

- Team Building / Ropes / Challenge Course Facilitator
- Lifeguard for Swimming (all guests) or Boating (Youth & Family)
- GLOBE Goes to Camp Facilitator
- Wagon Rides



**Wisconsin Lions
Camp Rentals**

Activities & Programming (cont.)



Staffed Activity Rates for Day-Only Guests

- Climbing Tower (Ages 10 - 17)**\$12 per person up to 2 hours**
- Climbing Tower (Ages 18+).....**\$14 per person up to 2 hours**
- Team Building (17 & under).....**\$10 per person up to 2 hours**
- Team Building (18+).....**\$12 per person up to 2 hours**
- Low Ropes/Initiatives (10 - 17).....**\$15 per person up to 4 hours**
- Low Ropes/Initiatives (18+).....**\$17 per person up to 4 hours**
- High Ropes (13 - 17).....**\$25 per person up to 4 hours**
- High Ropes (18+).....**\$28 per person up to 4 hours**
- Archery (All Ages).....**\$40 per facilitator per hour**
- Pontoon Boat Driver.....**\$40 per facilitator per hour**
- Staff Led Complimentary Activity.....**\$40 per facilitator per hour**
- Lifeguard.....**\$45 per lifeguard per hour**
- GLOBE Goes to Camp Facilitator.....**\$45 per facilitator per hour**
- Wagon Rides.....**\$45 per facilitator per hour**



Important Activities & Programming Information

- Group safety is paramount and our staff reserve the right to delay, postpone, or cancel activities at their discretion to ensure a safe experience for our guests.
- For all activities, we may require a safety orientation for guests prior to their participation in the activity.
- Lifeguards are required for all swimmers, regardless of age or ability level, and for any boaters who are under the age of 18. The typical ratio is 1 lifeguard per 25 swimmers with a group supplied lookout. For boating, the typical ratio is 1 lifeguard per 25 boaters.
- Pontoon boat drivers must be 21 or older, have a valid Driver's License, complete a review of policies and hands on training with our staff and complete a verification form. The policies will be provided to the prospective driver.
- Ropes course rates for day guests are based on a minimum of 10 guests.



School Group Programs



All of our school group programs are customized based on your students' interests, needs and skill levels. Pricing is based on a minimum of 15 students. We request a chaperone to student ratio of 1 to 8. If your ratio is different, please contact us.



1-Day Program

\$17 per Student

Chaperones Complimentary

Our 1-day program consists of all activity and program instruction for up to 6 hours at Camp. This program does not include any meals.



1-Day Program w/ Lunch

\$27 per Student

\$11.50 per Chaperone

Our 1-day program with lunch consists of all activity and program instruction for up to 6 hours at Camp and a lunch meal service from the Camp Favorites plan.



2-Day Program (Overnight)

\$85 per Student

\$48 per Chaperone

Our 2-day program consists of all activity and program instruction for up to 12 hours at Camp, up to 4 meals, 1 snack, and 1 night lodging.



3-Day Program (Overnight)

\$140 per Student

\$83 per Chaperone

Our 3-day program consists of all activity and program instruction for up to 18 hours at Camp, up to 7 meals, 2 snacks, and 2 nights of lodging.



**Wisconsin Lions
Camp Rentals**



Contact Information

 (715) 677 - 4969

 rentals@wisconsinlionscamp.com

 3834 County Road A • Rosholt, WI 54473

 www.wisconsinlionscamp.com/rentals



**Wisconsin Lions
Camp Rentals**